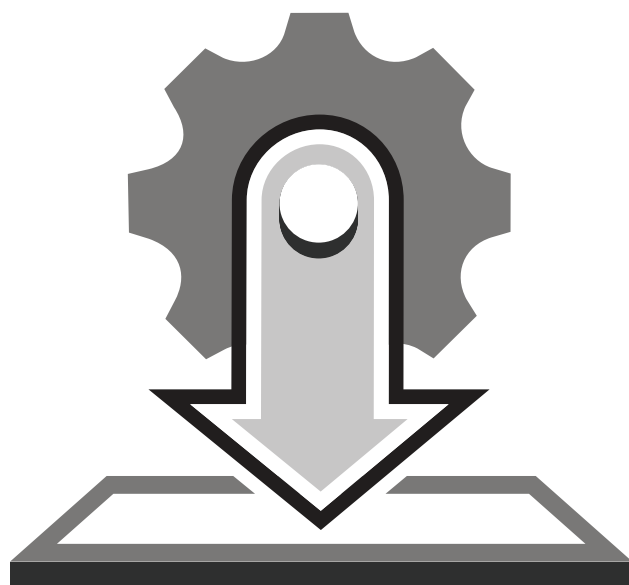


STAGENOW 2.10

INSTALLATION GUIDE



STAGENOW 2.10 INSTALLATION GUIDE

MN001501A10

Revision A

February 2018

No part of this publication may be reproduced or used in any form, or by any electrical or mechanical means, without permission in writing from Zebra. This includes electronic or mechanical means, such as photocopying, recording, or information storage and retrieval systems. The material in this manual is subject to change without notice.

The software is provided strictly on an “as is” basis. All software, including firmware, furnished to the user is on a licensed basis. Zebra grants to the user a non-transferable and non-exclusive license to use each software or firmware program delivered hereunder (licensed program). Except as noted below, such license may not be assigned, sublicensed, or otherwise transferred by the user without prior written consent of Zebra. No right to copy a licensed program in whole or in part is granted, except as permitted under copyright law. The user shall not modify, merge, or incorporate any form or portion of a licensed program with other program material, create a derivative work from a licensed program, or use a licensed program in a network without written permission from Zebra. The user agrees to maintain Zebra’s copyright notice on the licensed programs delivered hereunder, and to include the same on any authorized copies it makes, in whole or in part. The user agrees not to decompile, disassemble, decode, or reverse engineer any licensed program delivered to the user or any portion thereof.

Zebra reserves the right to make changes to any software or product to improve reliability, function, or design.

Zebra does not assume any product liability arising out of, or in connection with, the application or use of any product, circuit, or application described herein.

No license is granted, either expressly or by implication, estoppel, or otherwise under any Zebra Technologies Corp. intellectual property rights. An implied license only exists for equipment, circuits, and subsystems contained in Zebra products.

Zebra and the Zebra head graphic are registered trademarks of ZIH Corp. The Symbol logo is a registered trademark of Symbol Technologies, Inc., a Zebra Technologies company.

Portions of this software are based in part on the work of the Independent JPEG Group.

Zebra Technologies Corporation
Lincolnshire, IL U.S.A.
<http://www.zebra.com>

Revision History

Changes to the original guide are listed below:

Change	Date	Description
-01 Rev A	4/2015	Initial release
-02 Rev A	8/2015	Update with StageNow 2.1 information
-03 Rev A	12/2015	Update with StageNow 2.2 information
-04 Rev A	4/2016	Update with StageNow 2.3 information, add Android Lollipop support
-05 Rev A	8/2016	Update with StageNow 2.4 information
-06 Rev A	10/2016	Update with StageNow 2.5 information
-07 Rev A	1/2017	Update with StageNow 2.6 information
-08 Rev A	5/2017	Update with StageNow 2.7 information
-09 Rev A	11/2017	Update with StageNow 2.9 information Replace list of supported devices with link
-10 Rev A	2/2018	Update with StageNow 2.10 information Update list of supported OS's

TABLE OF CONTENTS

About This Guide

Introduction	vii
Chapter Descriptions	vii
Notational Conventions	vii
Related Documents	viii
Service Information	viii

Chapter 1: Getting Started

Introduction	1-1
StageNow Workstation Requirements	1-1
Device and MX Support	1-2

Chapter 2: Software Installation

Introduction	2-1
Software Requirements	2-1
Installing the StageNow Workstation Tool	2-2
Upgrading the StageNow Workstation Tool	2-8
Upgrading to a Non-Released Version of the StageNow Workstation Tool	2-9
Uninstalling StageNow	2-9
Log Files	2-9

Chapter 3: Client Configuration

Introduction	3-1
StageNow Client Installation	3-1
Log Files	3-2

ABOUT THIS GUIDE

Introduction

The *StageNow 2.10 Installation Guide* provides instructions for installing, uninstalling, and upgrading the StageNow Staging Solution, and includes information on versions, compatibility, and system requirements.

Chapter Descriptions

Topics covered in this guide are as follows:

- [Chapter 1, Getting Started](#) describes the hardware and software requirements for setting up the StageNow Staging Solution.
- [Chapter 2, Software Installation](#) provides instructions for installing and uninstalling the StageNow Workstation Tool on a host computer/workstation, as well as information on prerequisite software.
- [Chapter 3, Client Configuration](#) describes the client device requirements for connecting StageNow to the device.

Notational Conventions

The following conventions are used in this document:

- *Italics* are used to highlight the following:
 - Chapters and sections in this and related documents
 - Dialog box, window and screen names
 - Drop-down list and list box names
 - Check box and radio button names
- **Bold** text is used to highlight the following:
 - Key names on a keypad
 - Button names on a screen.

- bullets (•) indicate:
 - Action items
 - Lists of alternatives
 - Lists of required steps that are not necessarily sequential
- Sequential lists (e.g., those that describe step-by-step procedures) appear as numbered lists.

Related Documents

- *StageNow User Help File*, p/n MN-002672-xx - provides information on using the StageNow Staging Solution software.

For the latest version of this guide and all guides, go to: <http://www.zebra.com/support>.

Service Information

If you have a problem using the equipment, contact your facility's technical or systems support. If there is a problem with the equipment, they will contact the Customer Support Center at: <http://www.zebra.com/support>.

When contacting support, please have the following information available:

- Serial number of the unit
- Model number or product name
- Software type and version number

Zebra responds to calls by e-mail, telephone or fax within the time limits set forth in service agreements.

If your problem cannot be solved by support, you may need to return your equipment for servicing and will be given specific directions. Zebra is not responsible for any damages incurred during shipment if the approved shipping container is not used. Shipping the units improperly can possibly void the warranty.

If you purchased your business product from a Zebra business partner, please contact that business partner for support.

CHAPTER 1 GETTING STARTED

Introduction

This chapter includes the hardware and software requirements for setting up the StageNow Staging Solution.

StageNow Workstation Requirements

Following are the minimum requirements for the host computer to run the StageNow Workstation Tool:

- Operating system: Microsoft Windows 7 (64 bit)
- Operating memory: 2 GB minimum
- Hard drive storage: 6 GB minimum (if .Net Framework is not already installed)
- Screen resolution: 1366 x 768 (16:9 ratio) recommended
- .Net Framework 4.5.
.Net 4.5.1 is included in the StageNow installation wizard if required, and also available at <http://www.microsoft.com>
- StageNow Workstation Tool installer, available at <http://www.zebra.com/support>
- A PDF reader for supporting staging material, Adobe® Acrobat® Reader recommended.
- Java Runtime (JRE) to use Audio staging
- Wireless network interface card to use the Wi-Fi Hotspot feature

Device and MX Support

StageNow supports all Zebra Nougat, Marshmallow, Lollipop, and KitKat Android devices that have MX installed. Each OS supports the following MX versions:

- Nougat: MX 7.0, 7.1, 7.2
- Marshmallow: MX 6.0 and higher
- Lollipop: MX 5.1 and higher
- KitKat: MX 4.4 and higher

For a list of the Zebra Android devices and versions that StageNow supports, go to:
<http://techdocs.zebra.com/stagenow/2-10/gettingstarted/>



NOTE The MX features that each device supports depend on the Android OS, OSX, and MX versions in the BSP. Select the applicable device version in the matrix located at <http://techdocs.zebra.com/mx/compatibility/> to determine the supported features.

Zebra Nougat, Marshmallow, Lollipop, and KitKat devices that ship with the StageNow Client support all device configuration options that the StageNow Tool offers.

CHAPTER 2 SOFTWARE INSTALLATION

Introduction

This chapter describes how to install the StageNow Staging Solution software.

Software Requirements

The StageNow Workstation Tool requires and auto-installs Microsoft .NET Framework 4.5. The tool also includes the Staging Database and Staging Server.

Installing the StageNow Workstation Tool

The StageNow setup package is bundled with the required software.

- ✓ **NOTE** Installing the StageNow Workstation Tool also installs the Staging Database and Staging Server. No separate installation is required for these components.

See [Upgrading the StageNow Workstation Tool on page 2-8](#) if you have an older version of the StageNow Workstation Tool installed on the host PC.

To install the Workstation Tool:

1. Download the setup package **staging_solution.[Version Number].exe**.
2. Double-click the setup package file.
3. If you do not already have .Net Framework 4.5, the installation process prompts you to install it.

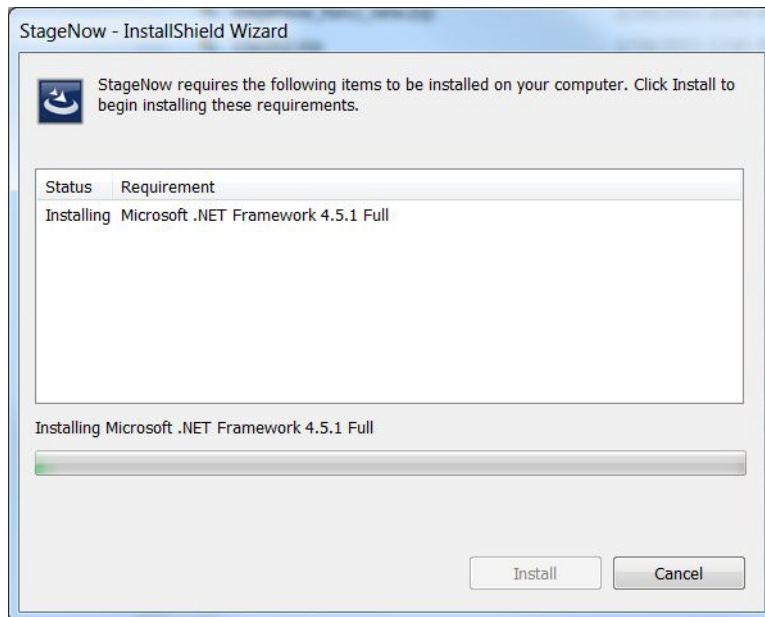


Figure 2-1 *Installing .NET Framework*

4. Select **Install**. When Framework installation completes, a window appears stating that the wizard is preparing to install StageNow.

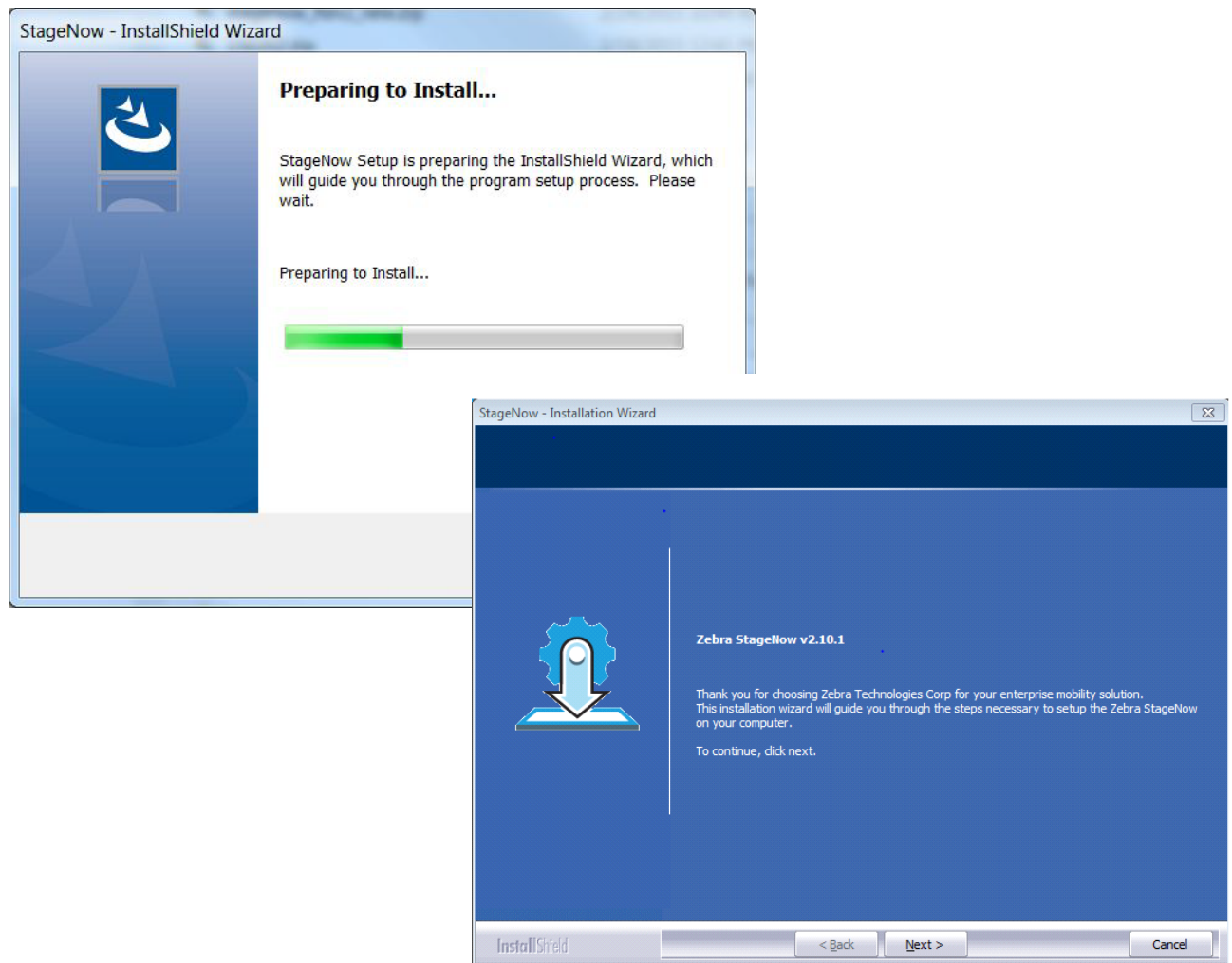


Figure 2-2 *Initial Installation Windows*

5. Select **Next** to continue.

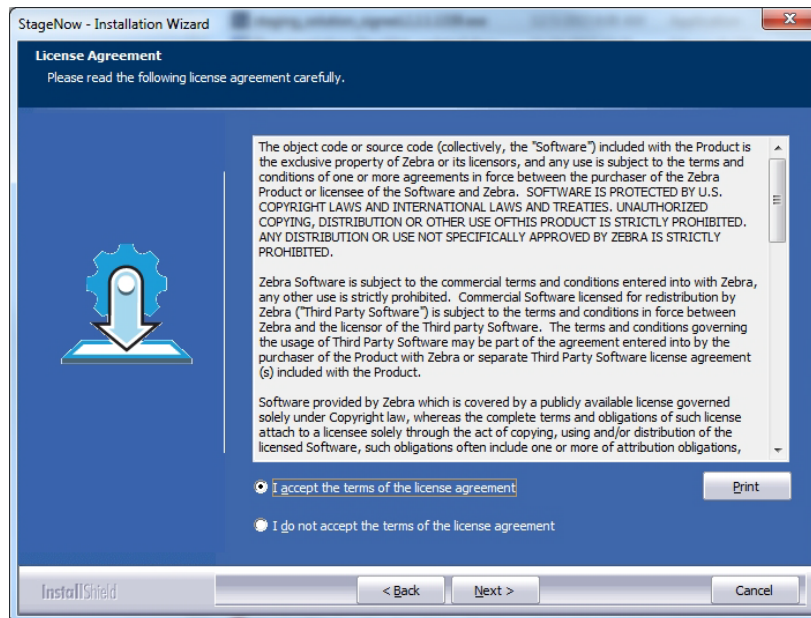


Figure 2-3 License Agreement Window

6. Select I accept the terms of the license agreement and select Next.

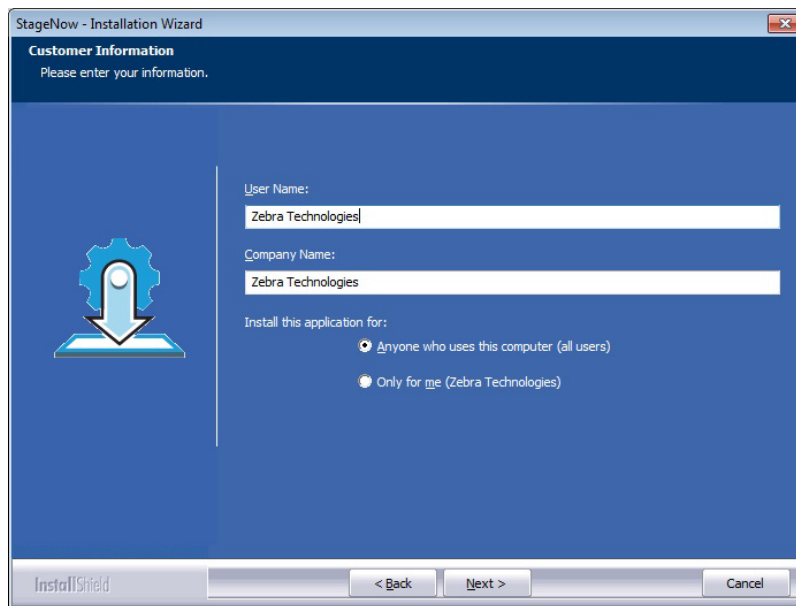


Figure 2-4 User Name Window

7. Enter a User Name and Company Name, and specify who can use the Workstation Tool.

8. Select **Next**.

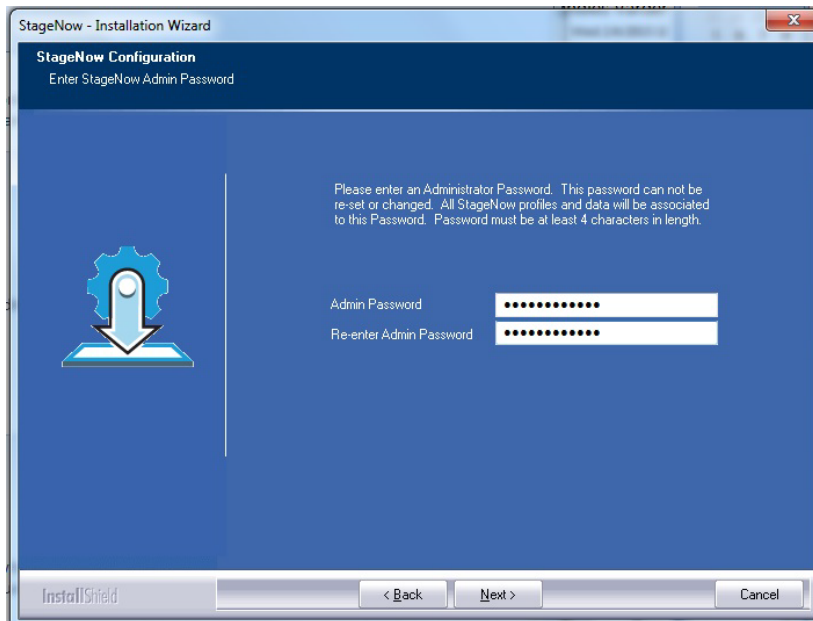


Figure 2-5 Administrator Password Window

9. Enter a password for the administrator and select **Next**.

✓ **NOTE** All StageNow profiles and data are associated with this password.

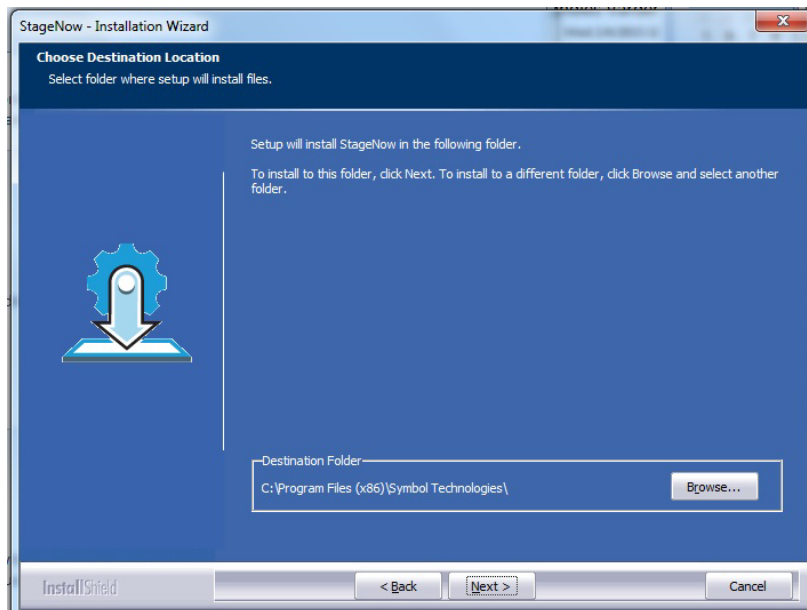


Figure 2-6 Destination Folder Window

10. Select **Next** to accept the default folder, or select **Browse** first to choose another installation folder.

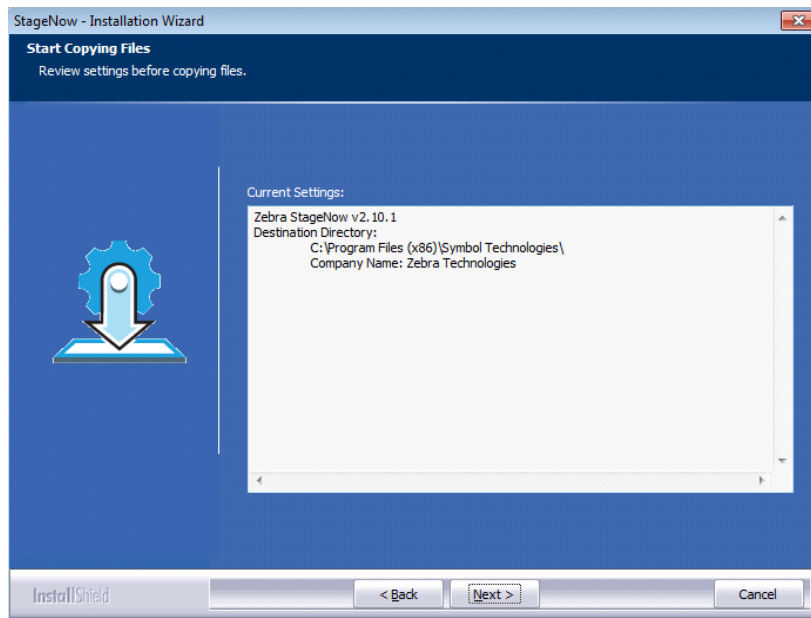


Figure 2-7 Review Settings Window

11. Select **Next** to accept the current settings, or select **Back** to make a change.

The wizard indicates that it is configuring the software for installation, then indicates that installation is almost complete.

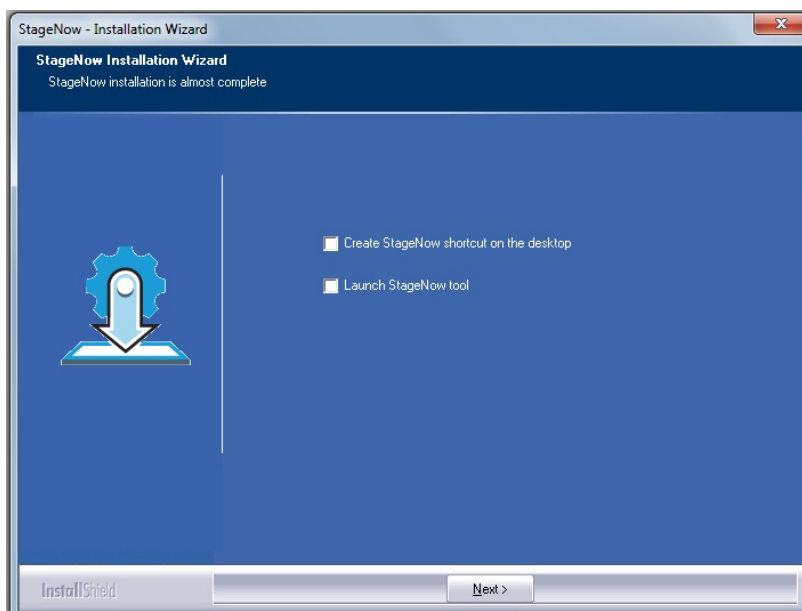


Figure 2-8 Installation Almost Complete Window

12. If desired, select checkboxes to create a shortcut on the desktop, and/or to launch the StageNow Workstation Tool, and select **Next**.

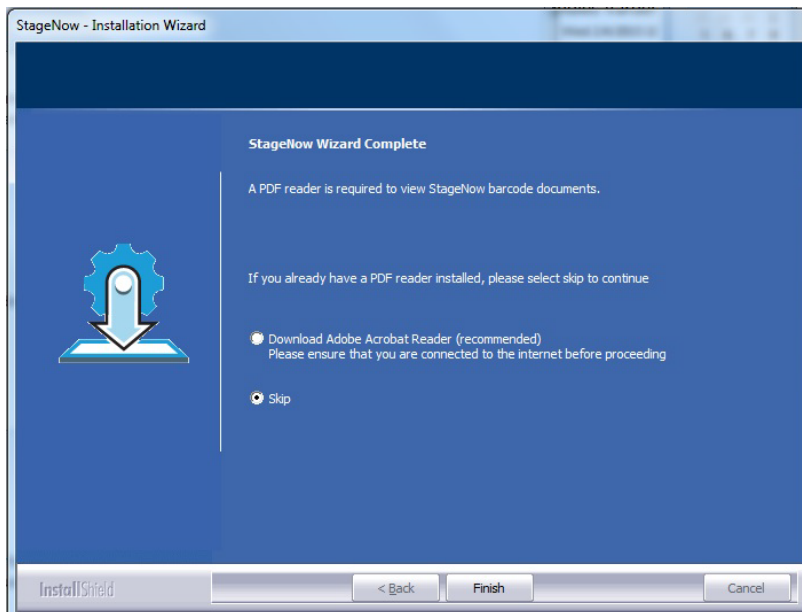


Figure 2-9 *Download PDF Reader Window*

13. Because staging material is presented in PDF files, the Wizard prompts you to download a PDF reader, or skip this if you already have a reader installed. Select the appropriate option and then select **Finish**.

If you chose to download Adobe Acrobat Reader, the reader installation page opens for quick download and installation.

Upgrading the StageNow Workstation Tool

If you have an older version of the StageNow Workstation Tool installed on the host PC, upgrade it.

- ✓ **NOTE** Complete all incomplete profiles before upgrading the StageNow Workstation tool. Profiles that are incomplete after upgrading can exhibit unexpected behavior.

1. Download the setup package **staging_solution.[Version Number].exe**.
2. Double-click the setup package file. InstallShield detects the existing version and displays the following message.

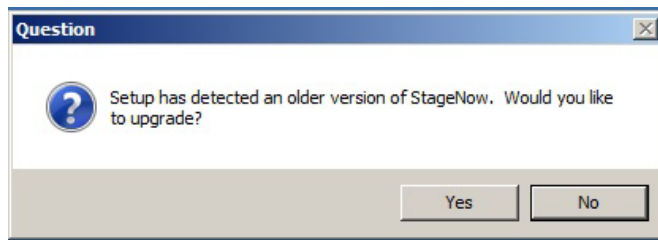


Figure 2-10 Upgrade Message

3. Select **Yes** to proceed with the upgrade, or **No** to retain the existing version and abort the upgrade. If you select **Yes**, the next message asks whether to retain or discard existing StageNow data (Settings, Profiles, etc.).

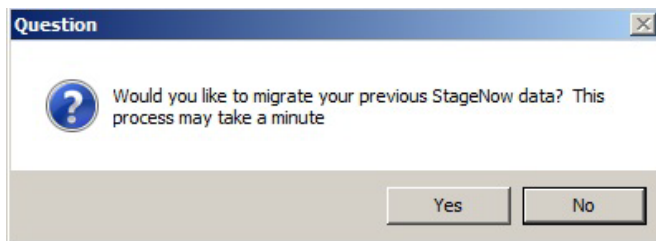


Figure 2-11 Migrate Data Message

4. Select the desired option to continue the upgrade.

- ✓ **NOTE** If you choose to retain existing data, the install process does not request an administrator password as it retains the existing password.

5. See [Installing the StageNow Workstation Tool on page 2-2](#) for the remainder of the installation instructions.

Upgrading to a Non-Released Version of the StageNow Workstation Tool

If you are upgrading an older version of the StageNow Workstation Tool to a non-release version, InstallShield displays the following message:



Figure 2-12 *Uninstall StageNow Message*

Manually uninstall the existing version using **Control Panel > Programs > Programs and Features > Uninstall**, then run the setup package file again.

Uninstalling StageNow

To uninstall the StageNow Workstation Tool:

1. Select **Control Panel > Programs > Programs and Features**.
2. Double-click **StageNow**. The Installation Wizard opens.
3. Follow the steps in the Wizard to complete the uninstallation.

✓ **NOTE** During uninstallation, the tool asks if you would like to remove your user and application (profile) data. Selecting **Yes** deletes all passwords, data, and profiles.

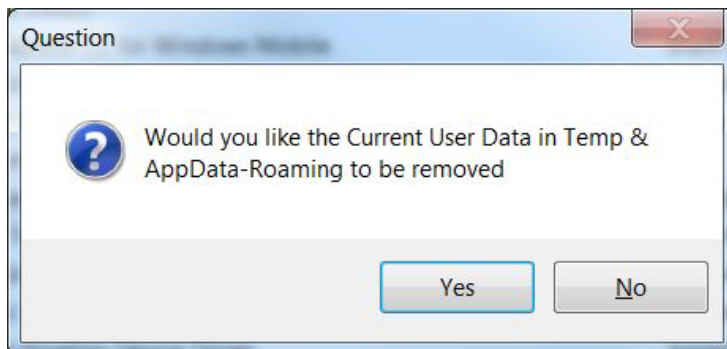


Figure 2-13 *Remove Data Prompt*

4. Select **Finish** to complete the uninstallation.

Log Files

StageNow Workstation Tool files are generated in the `%userprofile%\AppData\Roaming\StageNow\AST\logs` folder. Use these files for debugging and troubleshooting.

CHAPTER 3 CLIENT CONFIGURATION

Introduction

This chapter describes the client device requirements for connecting StageNow to the device, and lists the Android devices supported.

StageNow Client Installation

StageNow supports all Nougat, Marshmallow, Lollipop, and KitKat Android devices from Zebra. Nougat, Marshmallow, Lollipop, and KitKat devices that ship with the StageNow Client installed support all device configuration options that the StageNow Tool offers.

Log Files

Use device log files for debugging and troubleshooting. To review the log to determine the cause of an error, select **Yes** from the staging failure screen, or from the StageNow Client menu, select **Last Staging Error**.

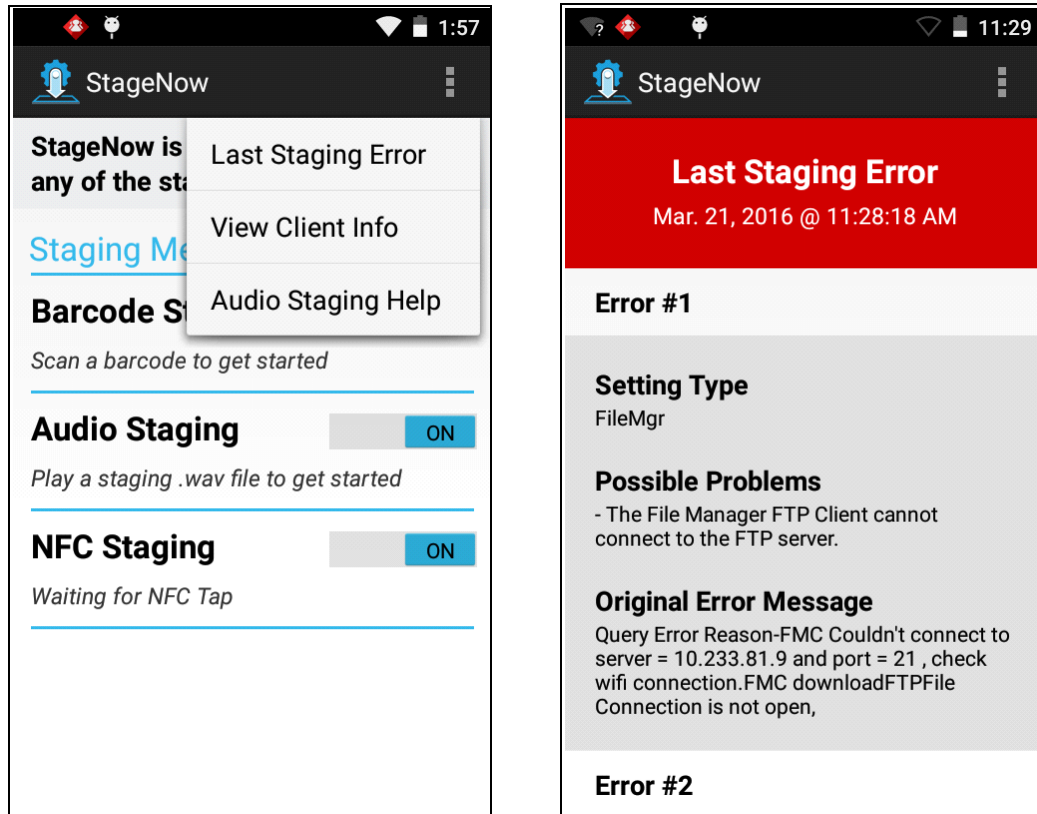


Figure 3-1 Viewing Logs

You can also view logs via the ADB Logcat.



Zebra Technologies Corporation
Lincolnshire, IL U.S.A.
<http://www.zebra.com>

©2018 ZIH Corp and/or its affiliates. All rights reserved. ZEBRA and the stylized Zebra head are trademarks of ZIH Corp, registered in many jurisdictions worldwide. All other trademarks are the property of their respective owners.

